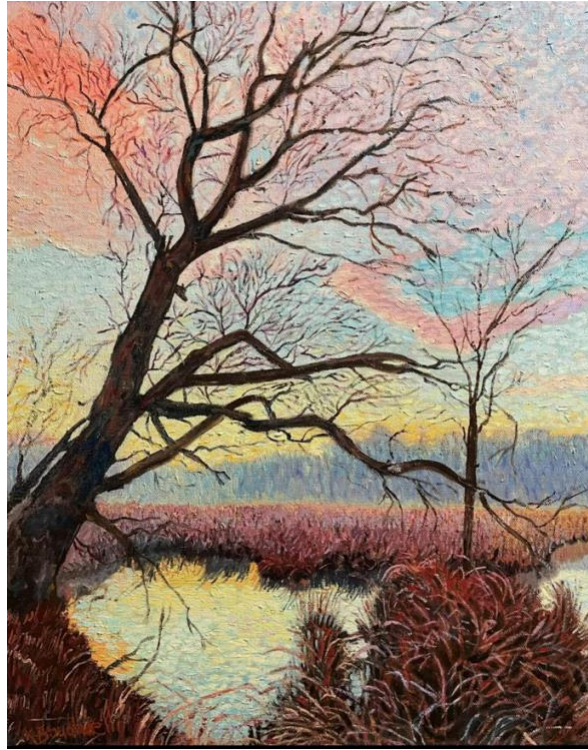


# Capitol Hill Art League Members Only Art Exhibit



*"Early Bird" by Karim Bouabdelli from FOM "New Member Showcase" 2025*

## **“Off The Beaten Path”**

May 31, 2025 — June 28, 2025

at

Frame of Mine Gallery

545 Eighth St SE, DC

Capitol Hill Art League members are invited to take us off the beaten path, by sharing artworks invoking any aspect – imaginary or real that invokes the idea of somewhere different, unusual or out of the ordinary. This is an un-juried, members-only show and pieces will be accepted as space allows. You can enter up to 3 of your favorite pieces.

### **Dates To Remember**

Digital Submission: April 28, 2025 - May 16, 2025 (Artists notified Sat. 5/17)

Delivery: May 31, 2025 (10 am – 12 pm)

Reception: May 31, 1-3 pm

Artwork Pickup: June 28, 10-Noon

Exhibit Managers: Steve Mabley and Rod Whyte, CHAL Steering Committee Co-Chairs

[caphillartleagueofdc@gmail.com](mailto:caphillartleagueofdc@gmail.com)

CHAL members may submit two-dimensional artwork in any media, including photography, not exceeding 24 inches in length or height, including the frame.

### **Submission Requirements:**

- All entries will be made digitally through SmarterEntry. Members may submit up to 3 artworks. Each submission requires a fee of \$5, as well as title, artist name, medium, dimensions (including frame), and price.
- Digital image files should be JPG format, not larger than 1200 pixels or 4.2 MB and named as follows: Last nameFirstname-TitleOfArtwork-Size-Price.jpg. Example: SmithTom-Sunrise-20x24-\$350.jpg.
- Artwork must not have been previously exhibited at Frame of Mine (FOM).
- Artwork must be original, wholly created and signed by the artist. Photographs and digital manipulations are considered original.
- All sources and reference materials must be free of any copyright or trademark infringement.
- Exhibiting artists grant permission for submitted images to be used for promotion without compensation.

Submission closes when 25 submissions are received or at midnight on the submissions closure date, above. Click on this link to submit: <https://client.smarterentry.com/CHAL>

### **Artwork Acceptance & Drop-Off:**

- Artists will be responsible for hand delivery of accepted artwork to Frame of Mine Gallery during artwork drop-off periods specified above. No work will be accepted by mail or delivery services.
- No packaging or protective wrapping may be left at the drop-off location.
- Exhibiting artists are encouraged to promote the exhibition to their followers via social media, email, and fliers. Use the promotional material provided by CHAL or FOM.

**Exhibiting Requirements:** Artwork will be checked at drop-off for compliance with the following requirements. Noncompliant artwork will not be accepted.

- Not longer than 24” in any dimension, including frame, and weighing no more than 30 pounds
- Only artwork depicted on the exhibition acceptance list will be accepted. No substitutions.
- Artwork must be clean, without damage, dry, securely supported, and without any loose/hanging parts or unfinished/sharp edges.
- Visible or gallery-wrapped edges must be fully painted over the sides or finished in a solid color.

- Artwork must be suitably framed with securely attached screw eyes, D-rings, or Nielsen hangers for metal frames, and hanging wire with <30° slack and not reaching above 1” below the top edge of the frame. No sawtooth hangers. (See examples of proper wiring at end of prospectus and on CHAL website.)
- Labeled on back with title, medium, size, price, artist, and contact information.
- Must be available for the duration of the exhibit.
- CHAL and FOM will not be responsible for loss or damage of artwork. The artist is advised to insure their work during the exhibition.

**Artwork Pick-Up:** Unsold artwork must be picked up only during the artwork pickup period specified above. There is no storage space at FOM, so all artwork must be retrieved during this time.

**Sales:** Frame of Mine graciously takes no commission on sales. Frame of Mine will collect the submitted sale price and sales tax from the purchaser, and will pay artists directly within two weeks after the exhibit closes. Work that is not for sale will be marked NFS.

**Certification:** By submitting artwork for this exhibit, I certify that I agree to the rules of the show as presented in this prospectus. Entries submitted are my own work and are not in violation of any copyright, trademark, or other similar laws or regulations. I will not hold Capitol Hill Art League (CHAL) or Frame of Mine (FOM) responsible for any loss or damage to my artwork while on the property at Frame of Mine in Washington, DC. CHAL reserves the right to reject artwork that does not comply with the requirements in this prospectus. Artists are advised to insure their artworks. I agree to allow CHAL, Capitol Hill Arts Workshop, and Frame of Mine to use my submission images in digital and print materials for promotional purposes.

The Capitol Hill Art League (CHAL) is a program of the Capitol Hill Arts Workshop (CHAW), located in the historic Capitol Hill neighborhood in Washington, DC. CHAL, with over 100 regional artist members, produces original art exhibitions and sales opportunities at CHAW and various venues in the DC region. CHAL/CHAW hosts lectures on art-related topics, offers workshops, and strives to support this vibrant community of artists.

Website: <https://www.caphillartleague.org/> Contact email: [caphillartleagueofdc@gmail.com](mailto:caphillartleagueofdc@gmail.com)

## **Hanging Requirements**

More detailed framing instructions and photos are posted on the CHAL website at

<https://www.caphillartleague.org/framing-requirements-for-capitol-hill-art-league-artwork>

## Installing D-Rings with Wire

*Lay your artwork on a towel or non-scratch surface to avoid damage to the art.*

**1** Measure 1/3 height from top of frame and mark.

**2** Attach D-Rings as shown. D-Ring faces toward middle of art.

**3** Loop and tie the wire through the D-Ring. Tying instructions on back.

**4** Peel and stick rubber bumpers. Bumpers protect your wall and help keep art hanging level.

check your wire angle

degrees

30° slack in wire

**Installing D-Rings without Wire**

Attach D-Rings as shown. D-Rings can then be hung directly on hooks, screws, or nails on the wall.

picturehang.com

## Tying Wire

**1** Cut a piece of wire 4-6" wider than the frame.

**2** Loop one end of wire about 2 inches through D-Ring and follow wire tying steps 1-4.

**3** Repeat on the other D-Ring leaving a small amount of slack in the wire.

**4** TIP: If the wire is too tight it decreases its strength, if too loose the art will tilt away from the wall.

**Picture Weight**

Many factors influence the maximum picture weight.

- D-Ring weight rating
- wire weight rating
- wire tying/wrapping quality
- wall construction
- wall hook weight rating

TIP: Always use hardware rated at weight higher than your artwork weight since there are many variables at play.