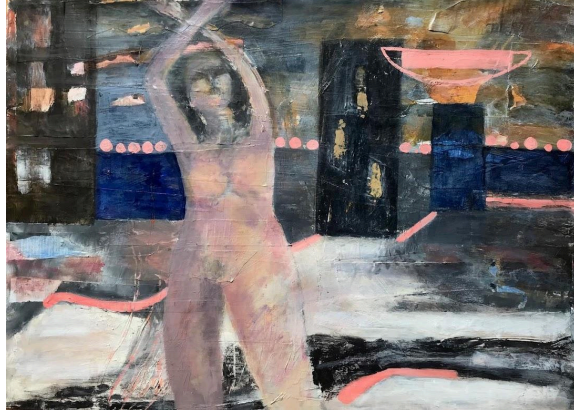




“DREAMSCAPES”

Juried Exhibition for CHAL Artists
September 30, 2024- March 28, 2025



Mimi Guernica, “Urban Yearning”

at

Center for Plastic Surgery

5550 Friendship Blvd #130, Chevy Chase, MD 20815

Dates to Remember:

Submission Opens: August 6, 2024
Submission Closes: September 6, 2024
Notification of Results: September 14, 2024
Drop Off Artwork: 1-3pm , Fri. Sept. 27,2024 or 9am-11am, Sat. Sept. 28
Reception: Friday, October 11, 6-8 pm
*combined with a CPS Breast Cancer Awareness Month event
Pickup: 9a-12p Sat. March 29 or 1-3p Mon. March 31, 2025

Exhibit Manager: Steve Mabley, CHAL Steering Committee CoChair
caphillartleagueofdc@gmail.com

“Dreamscapes” is the theme for this exhibit, which invites artists to share their visions, fantasies, dreams, or alternate realities; extrapolated from what we think we understand and know and projected into the realm of what is not so easily understood. The theme is meant to be an opening for artists free expression and interpretation. All genres, styles, and media are welcome. The Juror, Dr. Samir S. Rao, of the Center for Plastic Surgery, will select the final exhibitors from the SmarterEntry submissions and will consider the theme as part of the criteria for selection.

Center for Plastic Surgery is a medical office and thus a private venue not freely open to the public. However, patients, visitors, and clinic staff will be viewing the works every workday.

Artists are encouraged to maximize exposure to the exhibit by inviting clients, friends, and colleagues to the reception event on Friday, October 11th.

Submission Requirements:

- CHAL members may submit up to 5 works digitally through SmarterEntry,
- Digital image files should be JPG format, 1-10 MB, and named as follows: Last nameFirstname-TitleOfArtwork-Size-Price.jpg. Example: *SmithTom-Sunrise-20x24-350.jpg*.
- Other required information: Title, artist name, medium, dimensions (including frame!), year created, and price.
- Artwork must not have been previously exhibited at CPS.
- Artwork must be original, wholly created and signed by the artist within the past 5 years. Photographs and digital manipulations are considered original.
- Artwork source and reference material must be free of any copyright or trademark infringement.
- Exhibiting artists grant permission for images of accepted artwork to be used for promotion without compensation.
- Two-dimensional artwork must weigh no more than 30 pounds.
- Entry Fee: \$5/artwork.
- Submit at: <https://client.smarterentry.com/CHAL>

Artwork Acceptance & Drop-Off:

- Artists will be responsible for the hand delivery of accepted artwork to CPS during the designated drop-off time frame, above. No work will be accepted by mail or delivery services.
- No packaging or protective wrapping may be left at the drop-off location.
- Exhibiting artists are encouraged to promote the exhibition to their followers via social media, email, and fliers. Artists are encouraged to use the promotional material provided by CHAL.

Exhibiting Requirements: Artwork will be checked at dropoff for compliance with the following requirements. Noncompliant artwork will not be accepted.

- Only artwork depicted on the exhibition acceptance list will be accepted. No substitutions.
- Artwork must be clean, without damage, dry, securely supported, and without any loose/hanging parts or unfinished/sharp edges.
- Visible or gallery-wrapped edges must be fully painted over the sides or finished in a solid color.
- Artwork must be suitably framed with securely attached screw eyes, D-rings, or Nielsen hangers for metal frames, and hanging wire with <30° slack. No sawtooth hangers. (See examples of proper wiring at end of prospectus and on CHAL website.)
- Labeled on back with title, medium, size, price, artist, and contact information.
- Must be available for the duration of the exhibit.
- CHAL and CPS will not be responsible for loss or damage of artwork. The artist is advised to insure their work during the exhibition.

Artwork Pick-Up: Artwork must be picked up during the designated time frame, above. Artwork not picked up will be removed from CPS premises by one of the other exhibiting artists and held for pickup by the owner.

Sales: No commission on exhibition sales. The price submitted on the Smarter Entry registration online form will be the price presented at the time of the show for accepted work. All sales will be referred through CHAL and then arranged directly with the artist. Artists will make arrangements with buyers for delivery or drop off of sold artwork. Artwork may be replaced upon sale.

By submitting an entry, the registrant agrees with the following: I certify that I agree to the rules of the show as presented here. Entries submitted are my own work. I will not hold the Center for Plastic Surgery responsible for any loss or damage to my artwork. CHAL reserves the right to reject inappropriate or improperly framed work. (see example of properly framed artwork).

The Capitol Hill Art League (CHAL) is a program of the Capitol Hill Arts Workshop (CHAW). Located in the historic Capitol Hill neighborhood in Washington, DC. 100 Artists/members from the DC-metro area exhibit and sell original artwork at CHAW and various venues in the DC region. CHAL/CHAW hosts lectures on art related topics, offers workshops, and strives to support this vibrant community of artists.

Website: <https://www.caphillartleague.org/>

Email: caphillartleagueofdc@gmail.com

Hanging Requirements

Installing D-Rings with Wire

Lay your artwork on a towel or non-scratch surface to avoid damage to the art.

- 1** Measure 1/3 height from top of frame and mark.
- 2** Attach D-Rings as shown. D-Ring faces toward middle of art.
- 3** Loop and tie the wire through the D-Ring. Tying instructions on back.
- 4** Peel and stick rubber bumpers. Bumpers protect your wall and help keep art hanging level.

check your wire angle

degrees: 30, 15, 0

30° slack in wire

Installing D-Rings without Wire

Attach D-Rings as shown. D-Rings can then be hung directly on hooks, screws, or nails on the wall.

1/3 hgt. or less

PICTURE HANG solutions
picturehang.com

Tying Wire

- 1** Cut a piece of wire 4-6" wider than the frame.
- 2** Loop one end of wire about 2 inches through D-Ring and follow wire-tying steps 1-4.
- 3** Repeat on the other D-Ring leaving a small amount of slack in the wire.
- 4** TIP: If the wire is too tight it decreases its strength, if too loose the art will tilt away from the wall.

Picture Weight

Many factors influence the maximum picture weight.

- D-Ring weight rating
- wire weight rating
- wire tying/wrapping quality
- wall construction
- wall hook weight rating

TIP: Always use hardware rated at weight higher than your artwork weight since there are many variables at play.